



INSTALLATION INSTRUCTIONS

Progress Technology Rear Anti-Sway Bar

2013+ Dodge Dart

Part # 62.0606

No Revision (4/21/14)

WHO SHOULD INSTALL THIS PRODUCT?

Progress Technology products should only be installed by a qualified licensed mechanic experienced in the installation and removal of suspension components. Please read instructions from start to finish and verify the parts in the parts list before beginning installation.

Parts List

Description	Quantity
19mm Sway Bar	1
Bushing	2
U-bracket	2
Backing plate	2
Lube	1

1. Park vehicle on a smooth, level asphalt or concrete surface. Block front wheels. Jack up rear end of car and support with jack stands.
2. Using a 5mm hex and wrench remove the nuts that hold the top of the end links to the bar (Figure 1).
3. Remove the factory bushings and brackets (Figure 2). Retain the hardware for installation of Progress bar. Remove the OEM bar from the vehicle.



Figure 1



Figure 2

4. Locate the pivot "D" shaped polyurethane bushing and tube of special grease supplied in the hardware kit. Cut the end off the tube and apply grease to the bore (inside) of the bushing. Open bushing and snap them over the Progress sway bar, as positioned on the stock bar. Place the new brackets (supplied) over the bushings.
5. Place the backing plates provided onto the sway bar bushing bracket mounts as shown. This provides a surface for the bushings to be mounted against. (Figure 3)

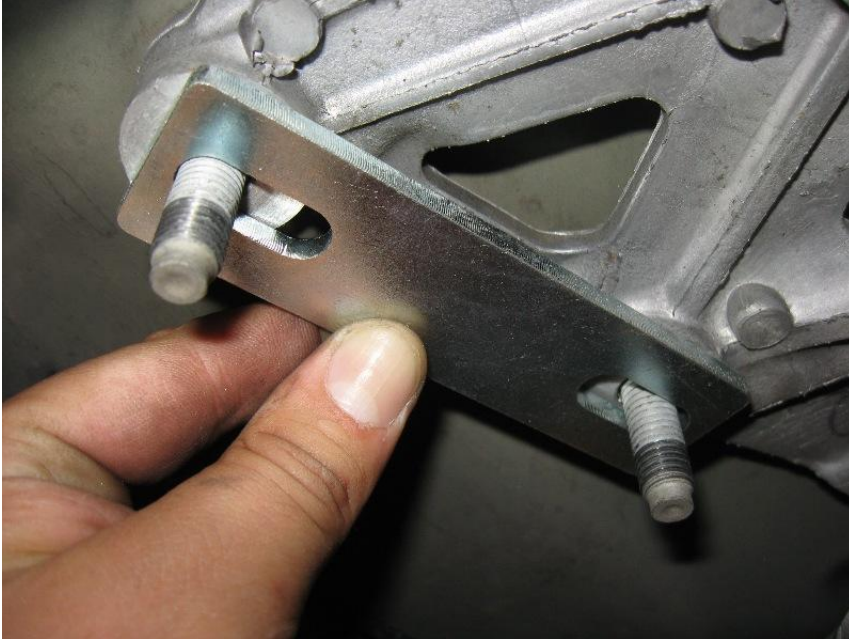


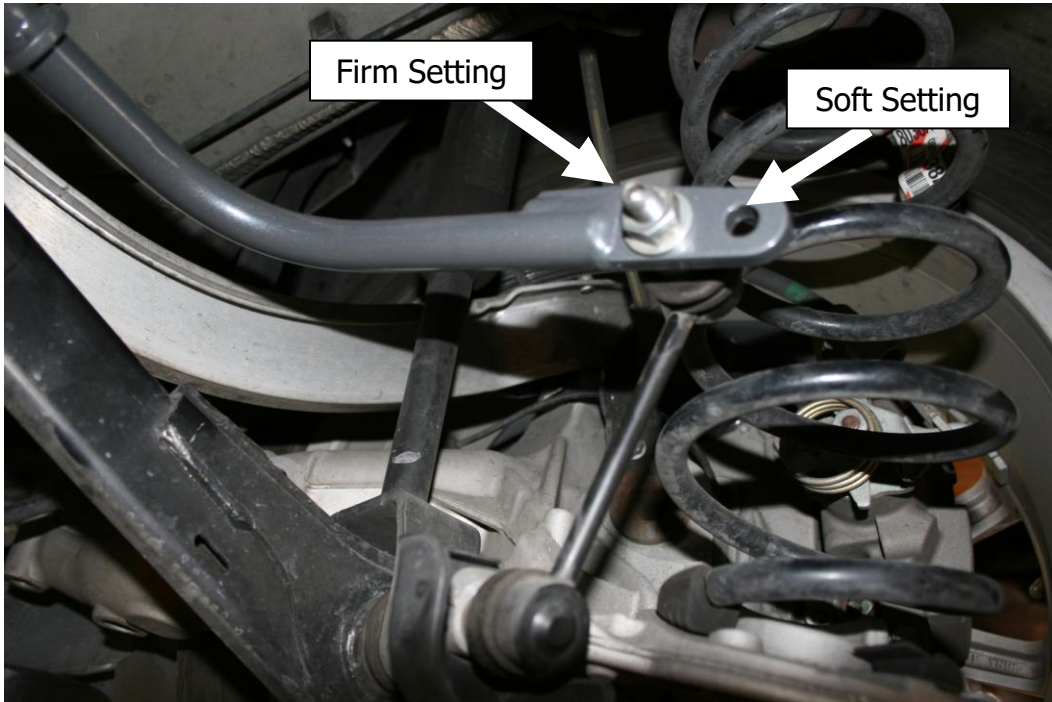
Figure 3

6. Place bar (with bushings and brackets already attached) onto the mounting studs. Using the OEM hardware, hand tighten at this time. (Figure 4)



Figure 4

7. Attach the end of the bar to the end links. The hole towards the rear of the vehicle is the soft setting.



Shown in firm setting

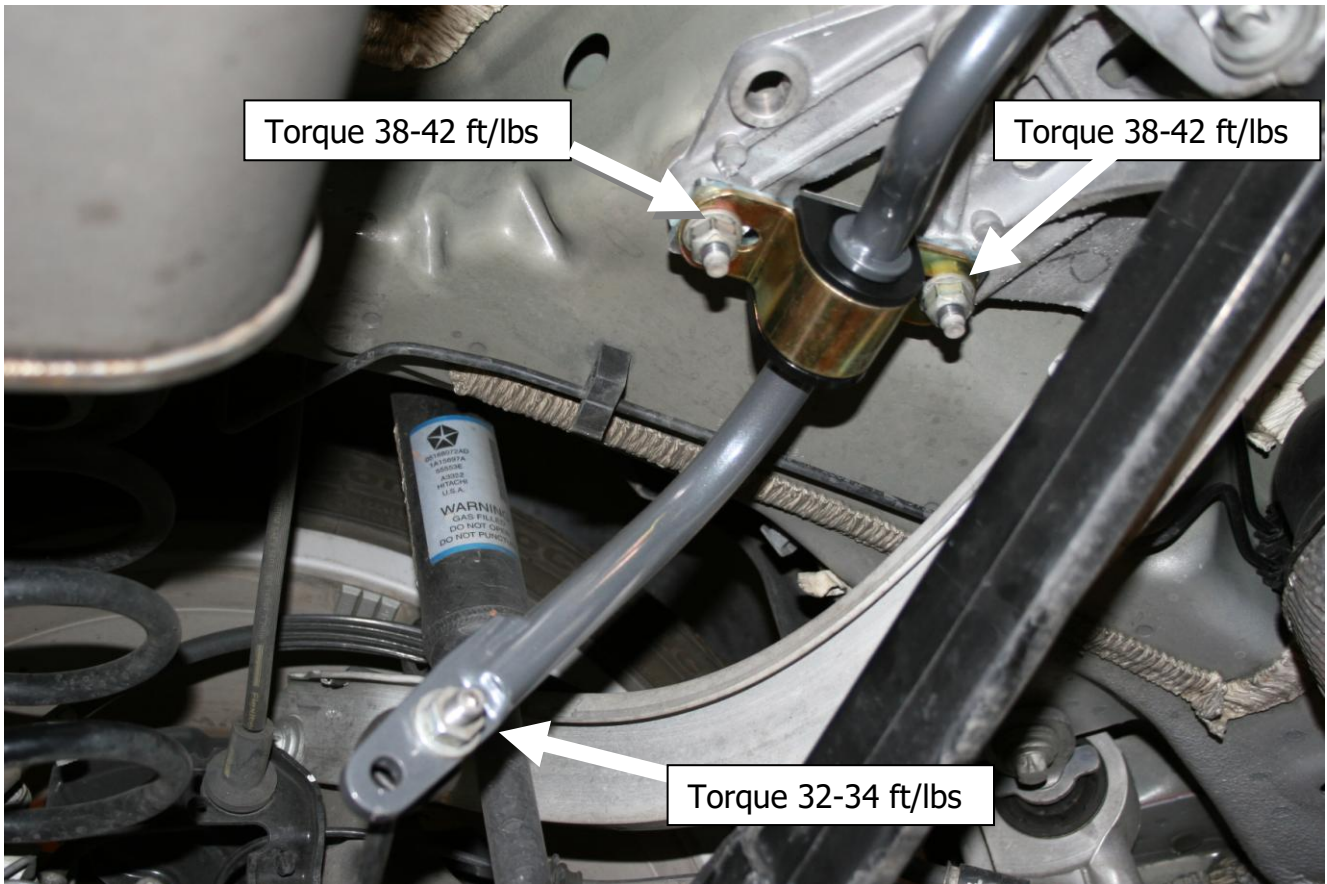
IMPORTANT NOTE ABOUT ADJUSTABLE SETTINGS:

We strongly suggest that your technician initially sets the end links in the softest setting. The softest setting will be the setting with the end links closest to the end or tip of the sway bar, furthest from the mounting bushings.

After installing the sway bar, we suggest that you drive the car carefully and within your abilities, noticing the changes in the handling characteristics. If driving in poor weather, exercise additional care during cornering and braking until you are familiar with the handling.

If you chose to use the firmer settings, again remember to drive the vehicle carefully, and take note of the changes you have made to the suspension. You will notice a handling difference with each sway bar settings.

8. Torque the bushing brackets hardware to 38-42 ft/lbs. Torque end links to 32-34 ft/lbs. Installation is complete. Check assembly periodically for tightness.



**Thank you for choosing Progress products.
For additional product and technical information,
visit our website.**