



INSTALLATION INSTRUCTIONS

Corvette C5-C6 Anti-Sway Bar Set

Part # 63.0480

Revision A (3/18/26)

WHO SHOULD INSTALL THIS PRODUCT?

Progress Technology products should only be installed by a qualified licensed mechanic experienced in the installation and removal of suspension components. Please read instructions from start to finish and verify the parts in the parts list before beginning installation.

Front installation note:

It may be difficult to attach the end links to the Progress front sway bar with the suspension at full droop (the lowest position). To simplify this step, raise the front hub assembly slightly, and the end link bolts will be easier to fit in place. You can raise one side at a time, or both sides if you have two floor jacks available. The fit issue is due to the length of the front shocks, as some brands have longer extension than the OEM length.

Front Parts List

Description	Quantity
Front Bar	1
Bushing	2
Lube	1

1. Park vehicle on a smooth, level, asphalt or concrete surface. Block rear wheels. Jack up front end of car and support frame with jackstands.
2. Locate and remove the nuts that attach the ends of the OEM sway bar to the end links. Remove the lower side of the end link from the control arm. Retain for re-installation. Remove the bolts that attach the bar mounting brackets to the frame (Figure A) and remove the OEM sway bar from the vehicle.

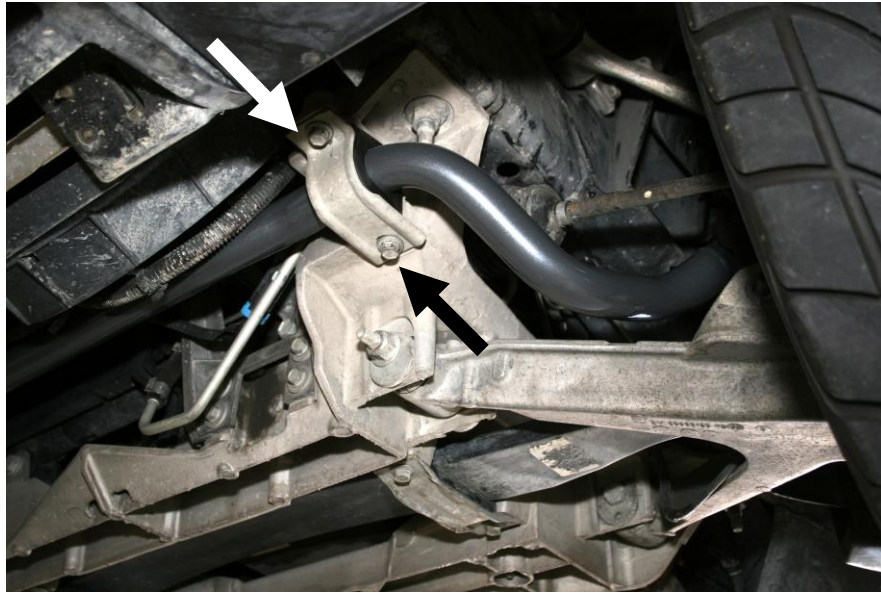
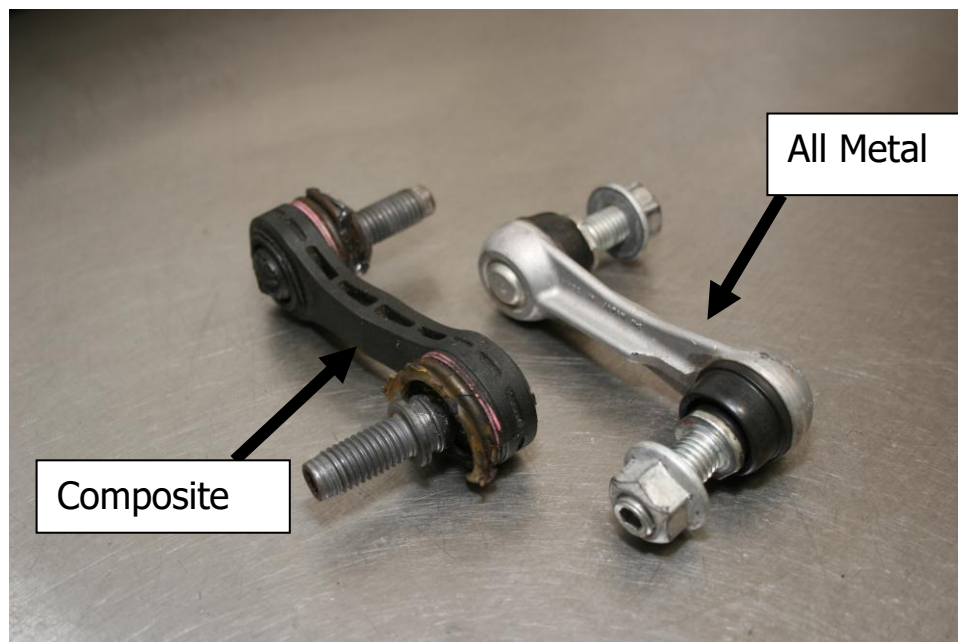


Figure A

3. Liberally grease the inner bore of the new polyurethane bushings with the lubricant provided and place the bushings over the new Progress sway bar in the same locations as the OE configuration. Install the Progress front sway bar using factory hardware and brackets. Torque mounting bolts to 36-40 ft.-lbs

We recommend that you do not reuse the composite end links that come equipped on some vehicles. Purchase the All-metal ones from a local Chevrolet dealer or the Progress adjustable end link kit (PN 65.0480). The composite links may fail with the larger diameter bar.



4. Install the end link nuts on the end links. Torque to 38-42 ft.-lbs. (Figure B)

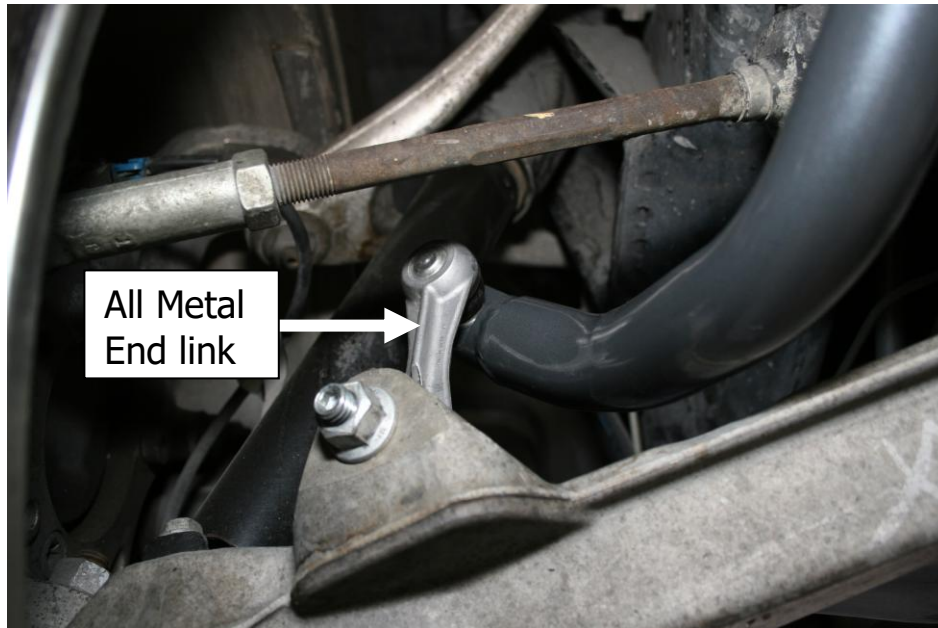


Figure B

5. Lower front of car onto the ground and roll car back and forth to settle suspension.
6. Front Installation is complete. Check assembly periodically for tightness.

Rear Parts List

Description	Quantity
Rear Bar	1
Bushing	2
Lube	1
Subframe Spacer Plate	2

7. Park vehicle on a smooth, level, asphalt or concrete surface. Block front wheels. Jack up rear end of car and support frame with jackstands.
8. Locate and remove the nuts that attach the ends of the OEM anti-sway bar to the end links. Remove the lower side of the end link from the control arm. Retain for re-installation. Remove the upper bolts that attach the bar mounting brackets to the frame, and only the nuts on the lower side. Remove the OEM sway bar from the vehicle. (Figure C)

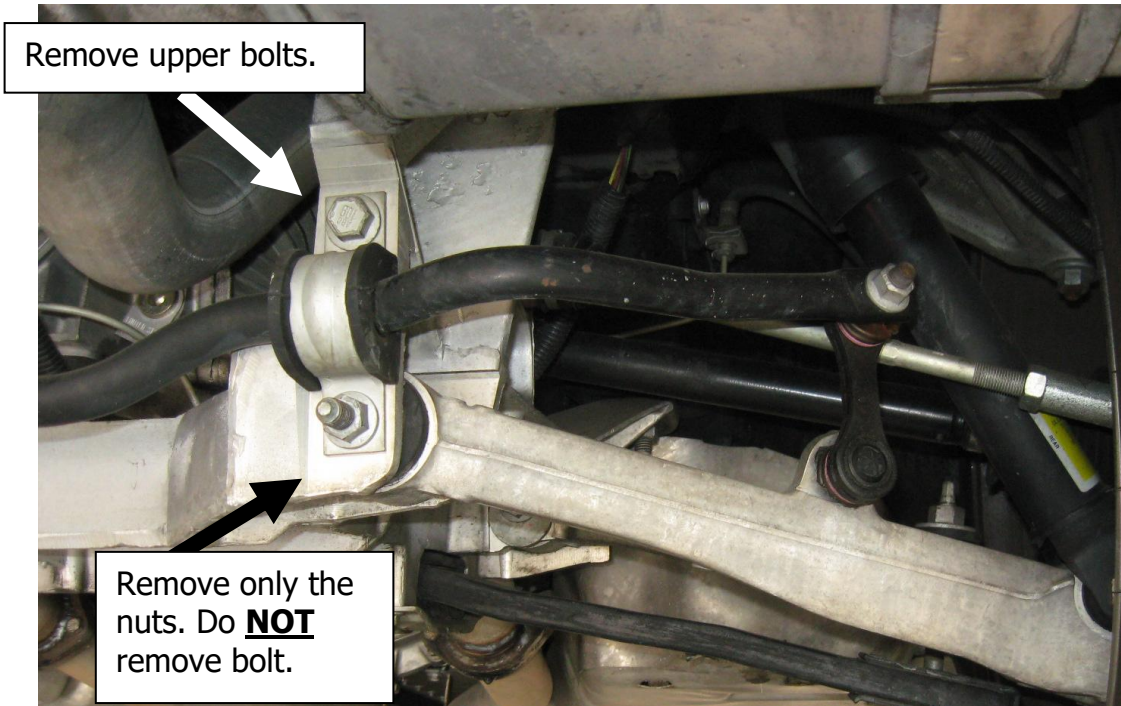
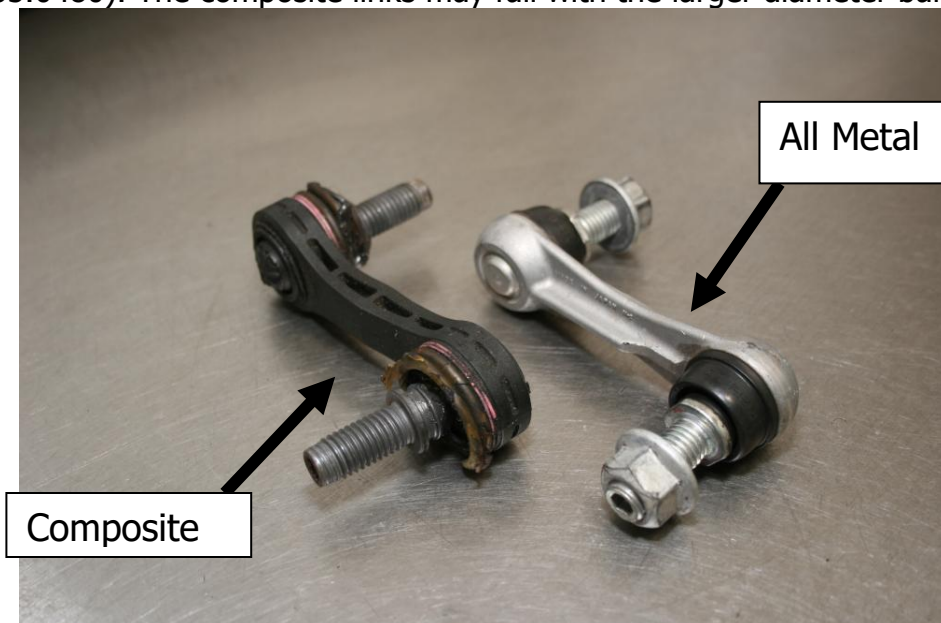


Figure C

9. Liberally grease the inner bore of the new polyurethane bushings with the lubricant provided and place the bushings over the new Progress sway bar in the same locations as the OEM configuration.
10. Install the Progress rear sway bar using factory hardware and bushing brackets. Place the supplied spacer plates under each bushing bracket location. These plates will add additional sub-frame clearance for the new bar. Torque the upper mounting bolts to 36-40 ft.-lbs and the lower nuts to 58-64 ft/lbs.

We recommend that you do not reuse the composite end links that come equipped on some vehicles. Purchase the All-metal ones from a local Chevrolet dealer or the Progress adjustable end link kit (PN 65.0480). The composite links may fail with the larger diameter bar.



IMPORTANT NOTE ABOUT ADJUSTABLE SETTINGS:

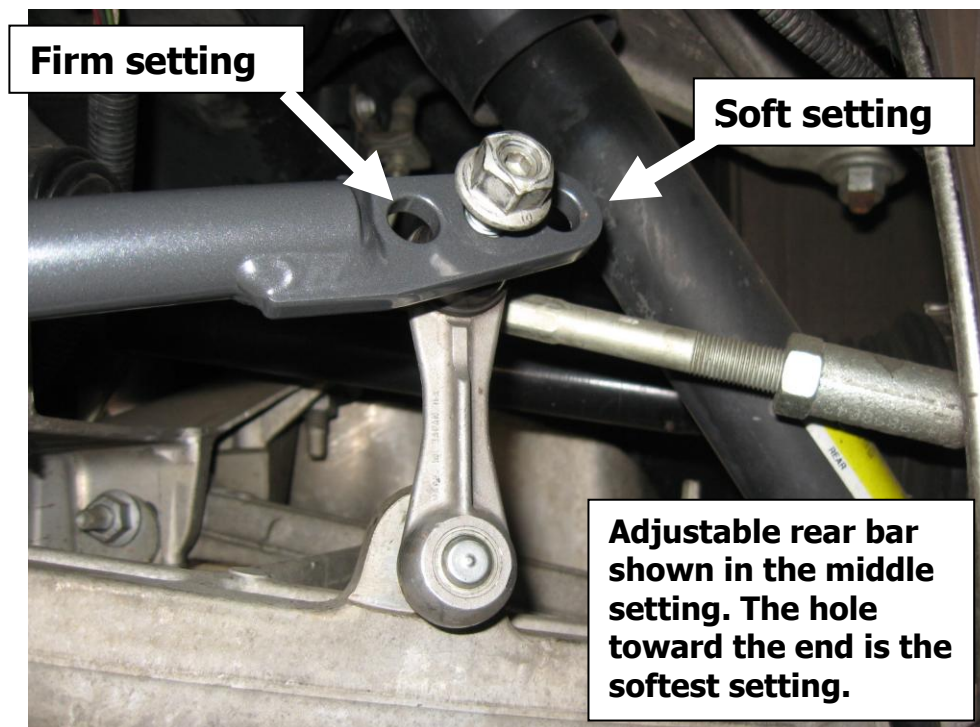
We strongly suggest that your technician initially sets the end links in the softest setting.

The softest setting will be the setting with the end links closest to the end or tip of the sway bar, furthest from the mounting bushings.

After installing the sway bar, we suggest that you drive the car carefully and within your abilities, noticing the changes in the handling characteristics.

If driving in poor weather, exercise additional care during cornering and braking until you are familiar with the handling.

If you chose to use the firmer settings, again remember to drive the vehicle carefully, and take note of the changes you have made to the suspension. You will notice a handling difference with each sway bar settings.



11. Install the end link nuts on the ends links. Torque to 38-42 ft.-lbs.

12. Lower rear of car onto the ground and roll car back and forth to settle suspension.

13. Installation is complete. Check assembly periodically for tightness.

Thank you for choosing Progress products.
For additional product and technical information,
visit our website.