



## INSTALLATION INSTRUCTIONS

2014-2019 Corvette C7 Sway Bar Set

Part # 63.0481

No Revision (1/19/23)

### WHO SHOULD INSTALL THIS PRODUCT?

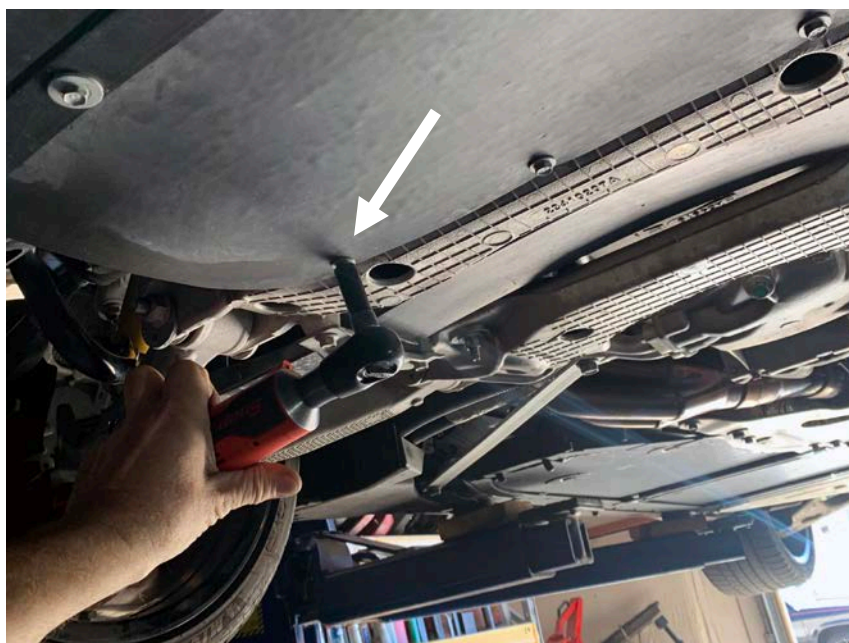
Progress Technology products should only be installed by a qualified licensed mechanic experienced in the installation and removal of suspension components. Please read instructions from start to finish and verify the parts in the parts list before beginning installation.

### Front Sway Bar Installation

#### Front Parts List

Description	Quantity
Front Sway Bar	1
Bushing	2
Lube	1

1. Park vehicle on a smooth, level, asphalt or concrete surface. Block rear wheels. Jack up front end of car and support frame with jackstands.
2. Remove the under tray and air deflectors to gain access to the OEM sway bar (A). Locate and remove the nuts that attach the ends of the OEM sway bar to the end links. Remove the lower side of the end link from the control arm. Retain for re-installation. Remove the bolts that attach the bushing mounting brackets to the frame (B), and remove the OEM sway bar from the vehicle.

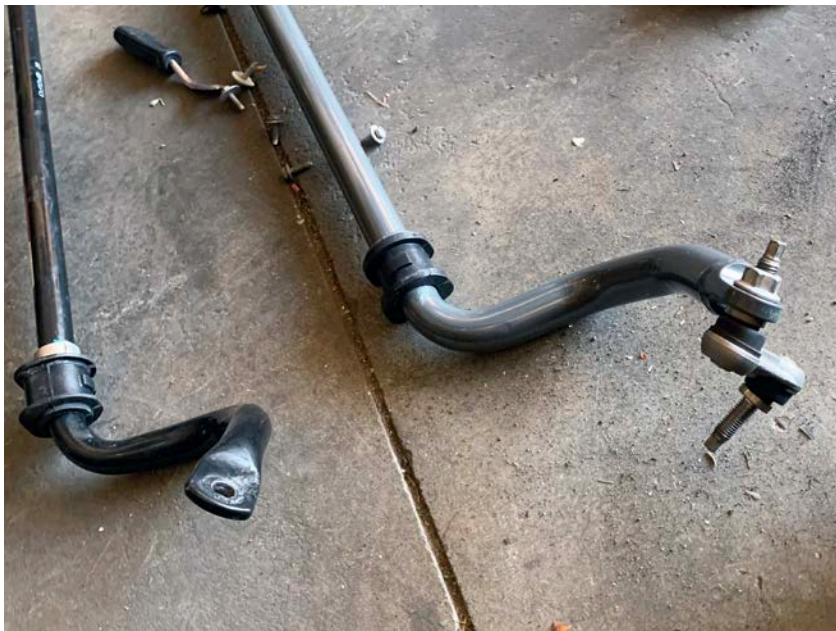


(A)



(B)

3. Liberally grease the inner bore of the new polyurethane bushings with lubricant provided, and place the bushings over the new Progress sway bar in the same locations as the OEM configuration. Remove the end link from the OEM sway bar and attach it to the new Progress sway bar. Install the Progress front sway bar using factory fasteners and brackets. Torque mounting bolts to 38-42 ft.-lbs (C & D) **DO NOT OVERTIGHTEN!**



(C)



(D)

4. Install the end links onto the lower control arm. Torque to 48-52 ft.-lbs. (E). Reinstall the under tray and air deflectors.



(E)

5. Lower the front of the car onto the ground, and roll car back and forth to settle suspension.
6. Front Installation is complete. Check assembly periodically for tightness.

## Rear Sway Bar Installation

### Rear Parts List

Description	Quantity
Rear Sway Bar	1
Bushing	2
Lube	1
Bushing Bracket Washers	4

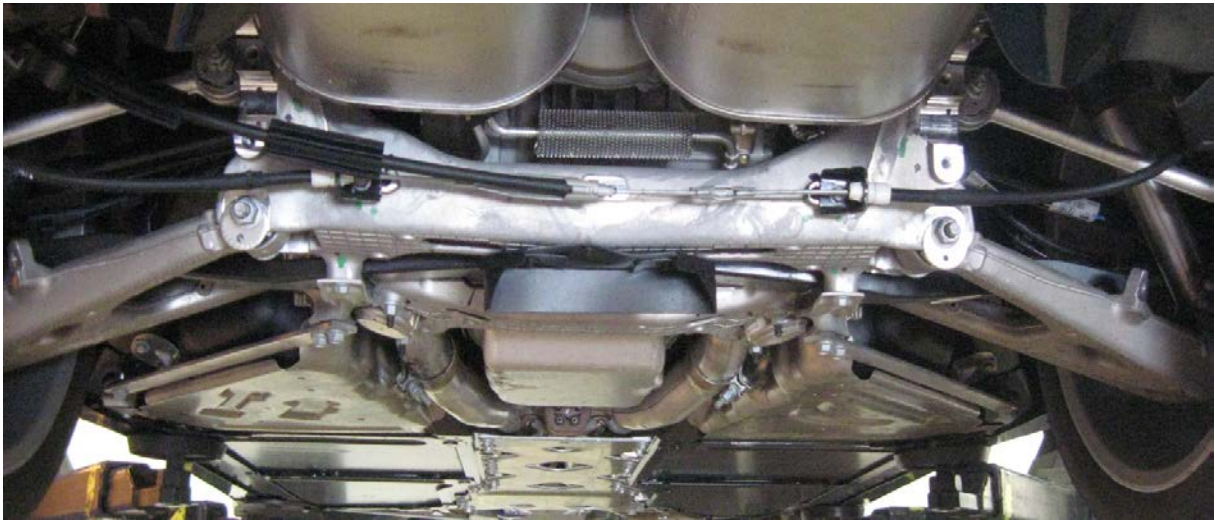
7. Park vehicle on a smooth, level, asphalt or concrete surface. Block front wheels. Jack up rear end of car and support frame with jackstands.
8. Locate and remove the nuts that attach the end links to the Lower Control Arms. Remove the lower side of the end link from the control arm. Remove the bolts that attach the sway bar mounting brackets to the frame. Remove the OEM sway bar from the vehicle. Retain all hardware for re-installation. (F)



(F)

9. Liberally grease the inner bore of the new polyurethane bushings with lubricant provided, and place the bushings over the new Progress sway bar in the same locations as the OEM configuration. Remove the end links from the OEM sway bar and attach them to the new Progress sway bar.
10. **NOTE: Vehicles NOT equipped with a rear sway bar (G) will require additional parts for installation. Base model and convertible vehicles will require additional GM parts to mount the rear sway bar. These parts are NOT included. Rear bushing clamps, fasteners, end links and end link nuts are required. See below for the GM part numbers required.**

- (2) 22945601 End link (FE6, FE7)
- (4) 11516078 M12 Flange nut (for end links)
- (2) 20959449 Sway bar bushing clamp
- (4) 11588742 Bolt, M10 1.5 x 50mm (for bushing clamps)



(G)

11. Install the Progress rear sway bar using factory hardware and bushing brackets. Place the supplied spacers under each bushing bracket (H). Torque the mounting bolts to 38-42 ft.-lbs. **DO NOT OVERTIGHTEN!**



(H)

12. Attach the end links onto the lower control arm. Torque to 48-52 ft.-lbs.
13. Lower rear of car onto ground, and roll car back and forth to settle suspension.
14. Installation is complete. Check assembly periodically for tightness.

#### **IMPORTANT NOTE ABOUT ADJUSTABLE SETTINGS:**

**We strongly suggest that your technician initially sets the end links in the softest setting. The softest setting will be the setting with the end links closest to the end or tip of the sway bar, furthest from the mounting bushings.**

**After installing the sway bar, we suggest that you drive the car carefully and within your abilities, noticing the changes in the handling characteristics.**

**If driving in poor weather, exercise additional care during cornering and braking until you are familiar with the handling.**

**If you chose to use the firmer settings, again remember to drive the vehicle carefully, and take note of the changes you have made to the suspension. You will notice a handling difference with each sway bar settings.**

**FRONT AND REAR TORQUE CHART**

<b>Hardware</b>	<b>Torque</b>
Bushing brackets	38-42 ft/lb
End link studs	48-52 ft/lb

Thank you for choosing Progress products.  
For additional product and technical information,  
visit our website.