



TM

INSTALLATION INSTRUCTIONS

Progress Technology Rear Adapter Kit

2001-2005 Civic

Part # 65.1006

No Revision (9/4/02)

WHO SHOULD INSTALL THIS PRODUCT?

Progress Technology products should only be installed by a qualified licensed mechanic experienced in the installation and removal of suspension components. Please read instructions from start to finish and verify the parts in the parts list before beginning installation.

Parts List

Description	Quantity	Description	Quantity
Adapter Bracket	2	3/8 SAE Flatwasher	12
3/8-24 Female Heim	2	3/8 USS Flatwasher	6
3/8-24 Male Heim	2	3/8-16 Nylock Nut	10
3/8-24 Jam Nut	2	5/16-18 "AT" Series Insert	2
3/8 Heim Spacer	8	5/16-18 x 1.00 HHCS	2
3/8-16 x 2.00 HHCS	2	5/16-18 x 1.50 Hex Tap Bolt	2
3/8-16 x 1.75 HHCS	2	5/16-18 Hex Nut Zinc	4
3/8-16 x 1.00 HHCS	2	5/16 SAE Flatwasher	2
3/8-16 U-bolt	2		

1. Park vehicle on a smooth, level, asphalt or concrete surface. Block front wheels. Jack up rear end of car and support with jackstands. Remove rear wheels and tires.
2. Remove lower control arm bolts. Mount rear brace using M12 bolt, washer and spacer provided in the sway bar kit. Place spacer on the back side of brace. Tighten bolt. Make sure the brace is flush against the chassis (See figure one.)



Figure 1



Figure 2 Driver side view from rear



Figure 3

3. Mark the center of all four rear brace mounting holes. Remove the brace. Drill the four holes using a 1/2" drill bit. Make sure to drill top holes as straight as possible.



Figure 4

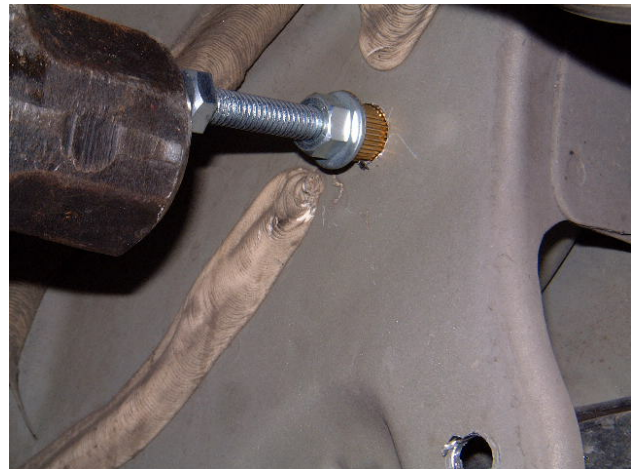


Figure 5

4. Assemble the nutsert as shown for installation, using the full thread 5/16 bolt, nut and washer. Thread the bolt about 1/8" past the end of the nutsert. Place nutsert into hole.



Figure 6

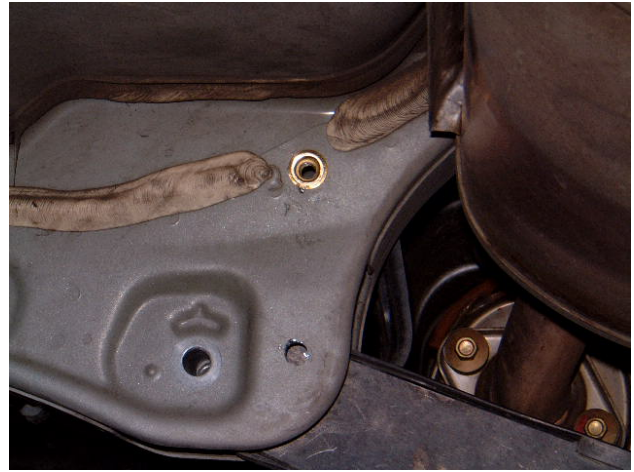


Figure 7

5. Use two 1/2" wrenches. Hold one wrench on the bolt head, and with the other wrench, tighten the nut (slight side load will help start the nut-sert). The nut-sert is fully seated when the nut gets tight. Remove the bolt. You now have a threaded hole and a thru hole to mount the rear brace. (Figures 6&7)
6. Attach brace with lower control arm bolt only. Remember to put the spacer on the bolt behind the brace.
7. Mount the bar as shown in the bar instructions. Use the 3/8-16 x 1.00 in the lower hole and the 5/16-18 x 1.00 in the upper hole, use washers on both.



Figure 8



Figure 9

8. Mount the end link bracket using the 3/8 u-bolt provided (as shown in figures eight and nine). The u-bolt goes around the lower trailing arm. Do not tighten yet. Assemble the end links and attach them to the sway bar and end link bracket (shown on diagram). Position the brackets so that the end links are as close to vertical as possible. Now tighten the brackets and the remaining hardware.

**Thank you for choosing Progress products.
For additional product and technical information, visit our website.**

