



TM

INSTALLATION INSTRUCTIONS

Progress Technology Reinforcement Kit

2006 – 2011 Honda Civic, all

Part # 65.1009

No Revision (4/9/09)

WHO SHOULD INSTALL THIS PRODUCT?

Progress Technology products should only be installed by a qualified licensed mechanic experienced in the installation and removal of suspension components. Please read instructions from start to finish and verify the parts in the parts list before beginning installation.

Parts List

Description	Quantity
Reinforcement Tab - Rev. A	2
M8-1.25 x 20 HHCS	4
M8-1.25 Nylock Nut	4
5/16 SAE Flatwasher	8

*****Reinforcement plates*****

These plates are designed to strengthen the end link mounting point where the end link connects to the rear lower control arm.



Remove OE end link from lower arm.



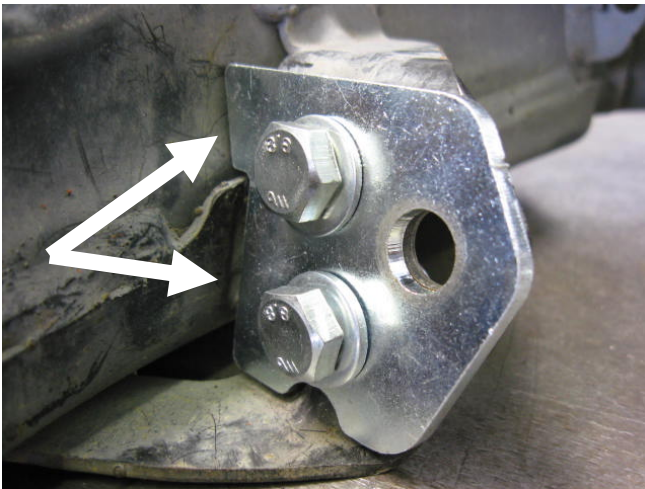
Align plate with the holes on the mounting tab.



Use the M8 hardware to fasten plate 28ft/lbs



Optional 2nd hole marked and drilled (11/32 bit)



For added strength grind the plating off the tab near the control arm and weld to strengthen the mount further.



Reattach the end link, torque to factory spec 28 ft/lbs.

1. Torque endlink to 28 ft/lbs at sway bar mounting hole and at reinforcement plate.
2. Installation is complete. Check assembly periodically for tightness.

Thank you for choosing Progress products.
For additional product and technical information, visit our website at
www.progressauto.com