



## INSTALLATION INSTRUCTIONS

Progress Technology Rear End Link Kit

2006-2015 Honda Civic, all

Part # 66.3015

No Revision (8/3/16)

### WHO SHOULD INSTALL THIS PRODUCT?

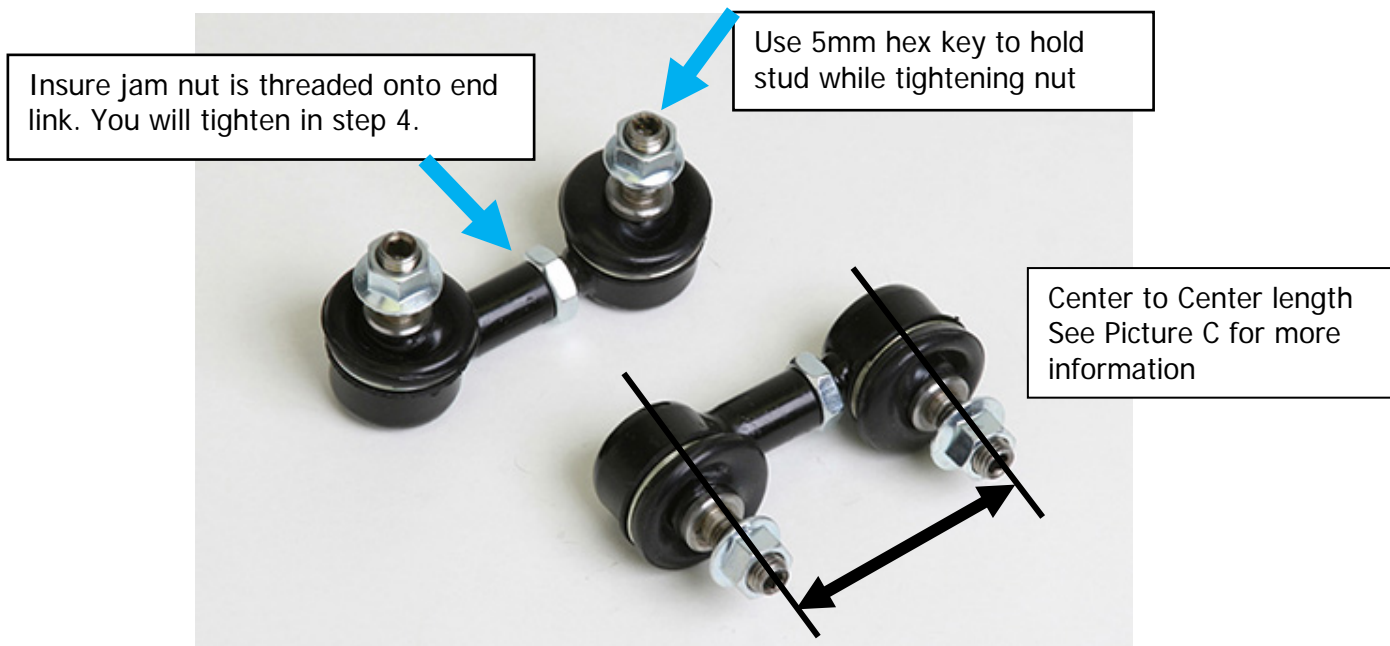
Progress Technology products should only be installed by a qualified licensed mechanic experienced in the installation and removal of suspension components. Please read instructions from start to finish and verify the parts in the parts list before beginning installation.

### Parts List

Description	Quantity
Stabilizer Link, Female, with flange nut	2
Stabilizer Link, Male, with flange nut	2
M10 Jamnut - thin (for endlink)	2

**End link installation must be done at ride height to insure proper length and orientation.**

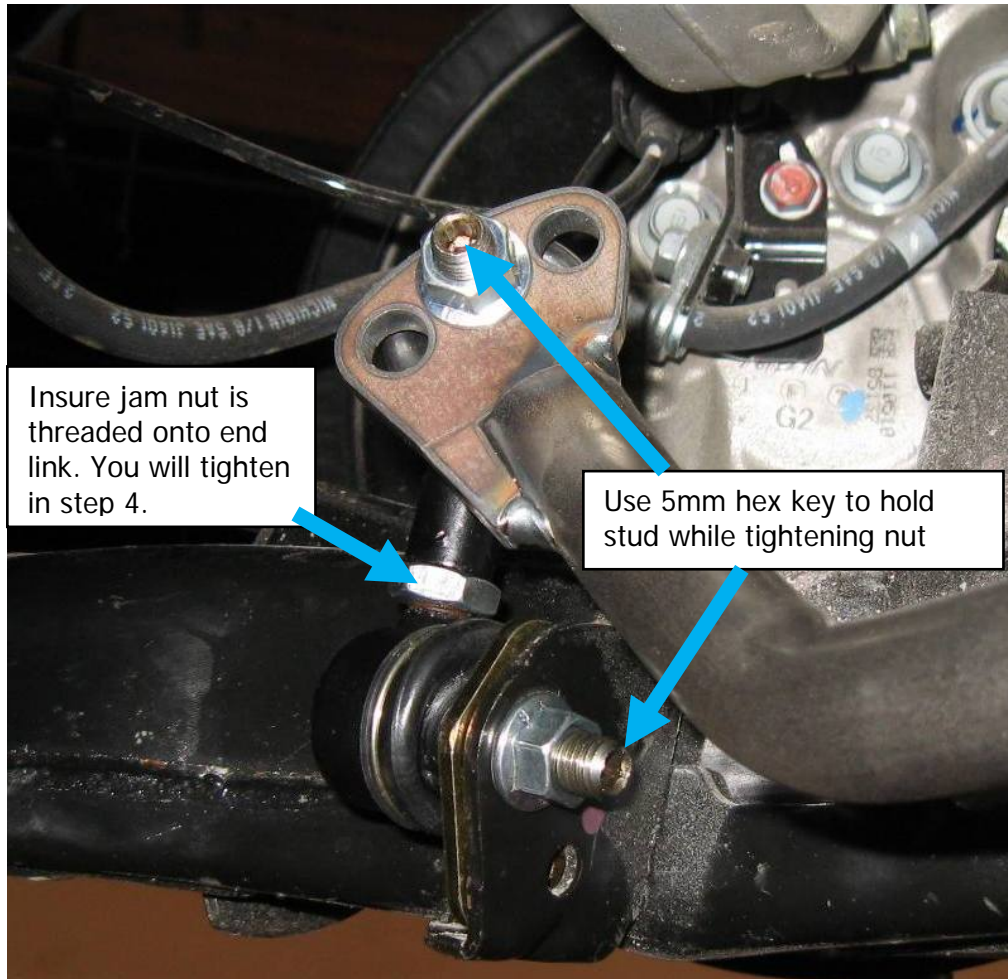
1. Assemble end links with jam nut as shown (Picture J). Adjust length to the correct center to center dimensions as shown in Picture L.



Picture A

2. Turn the links so they are 90 degrees to the mounting locations. Attach end link stud to sway bar tab and to lower control arm. (Picture K) Torque to 38-42 ft/lb. DO NOT USE an impact wrench or thread locker compound (loctite).

NOTE: If ball socket turns while tightening, use a 5mm hex key and open end wrench to tighten nut, then Torque to 38-42 ft/lb

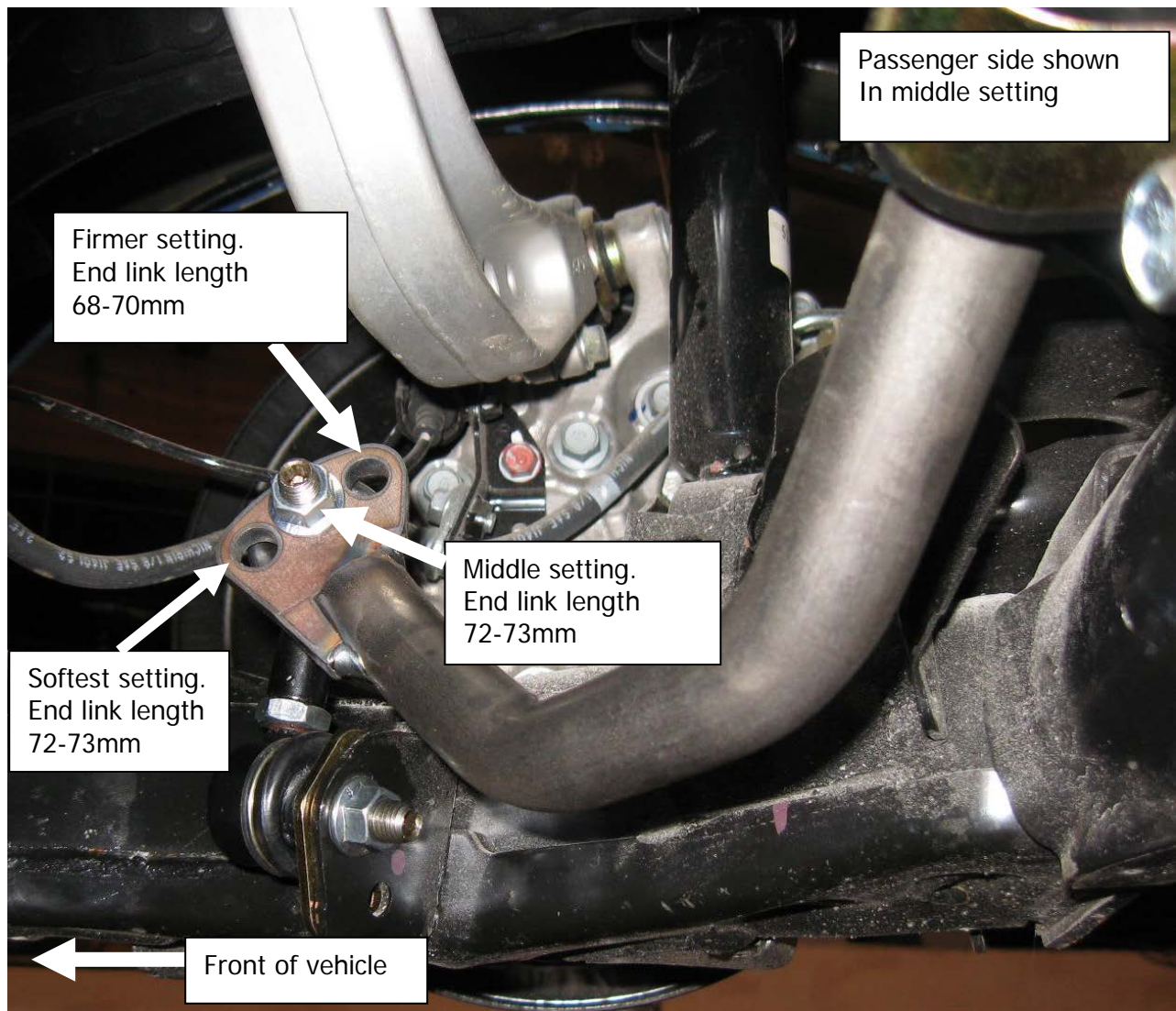


Picture B

3. Rotate the links so they are parallel to the mounting locations, and they can travel both directions without interference.
4. Tighten the two jam nuts firmly using an open end wrench
5. **Check end links at ride height for proper length and orientation.** Remember to re-tighten jam nut after every end link length adjustment.

**Center to Center length**

- 72-73mm for Soft & Middle setting
- 68-70mm for Firm setting



Picture C

#### END LINK ADJUSTMENT NOTES:

- Check end link length for correct geometry at ride height. End links should be as close to vertical as possible. This will NOT look correct with the vehicle on a floor jack (full droop).
- End link length adjustment allows for proper geometry for the three bar adjustment settings.
- End link adjustment allows for neutral bar setting while adjusting corner weights.
- Extreme lowered ride height may require different end link length adjustment.
- Remember to re-tighten jam nut after every end link length adjustment.
- Failure to properly tighten as noted above will result in noise and possible end link failure.

#### Check installation

- End link stud at bar tab: Torque to 38-42 ft/lb
- End link stud at LCA: Torque to 38-42 ft/lb
- Jam nut tightened with open end wrench.

**IMPORTANT NOTE ABOUT ADJUSTABLE SWAY BAR SETTINGS:**

We strongly suggest that your technician initially sets the end links in the softest setting. The softest setting will be the setting with the end links closest to the end or tip of the sway bar, furthest from the mounting bushings.

After installing the sway bar, we suggest that you drive the car carefully and within your abilities, noticing the changes in the handling characteristics. If driving in poor weather, exercise additional care during cornering and braking until you are familiar with the handling.

If you chose to use the firmer settings, again remember to drive the vehicle carefully, and take note of the changes you have made to the suspension. You will notice a handling difference with each sway bar settings.

Installation is complete. Check assembly periodically for tightness.

**Thank you for choosing Progress products. For additional product and technical information, visit our website.**